



Connections House, London, N3

£2,000 Per Calendar
Month

Finchleys are proud to present this fabulous first-floor, two-bedroom, two-bathroom purpose-built flat with allocated secured off street parking, situated within a modern development directly opposite the Hollywood Bowl and Vue Cinema complex on High Road in Finchley.

The property features a contemporary interior, two balconies, and two bathrooms (one ensuite), offering both comfort and convenience.

An internal viewing is highly recommended to fully appreciate the size and condition of this wonderful home.

2  2  1  

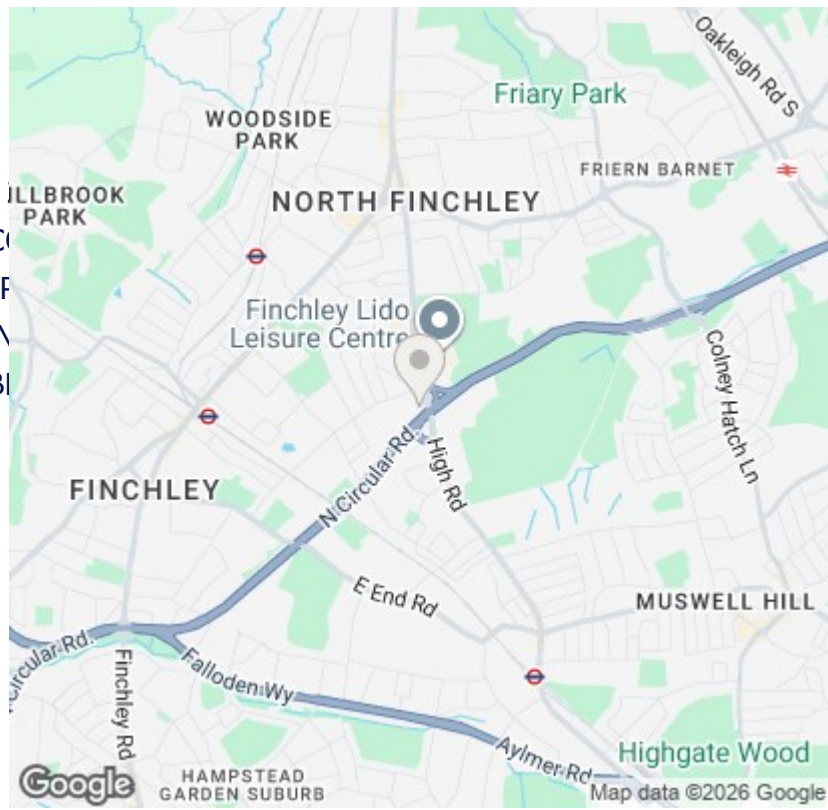


**FINCHLEYS
ESTATES**

CLIENT FOCUSED. RESULTS DRIVEN.

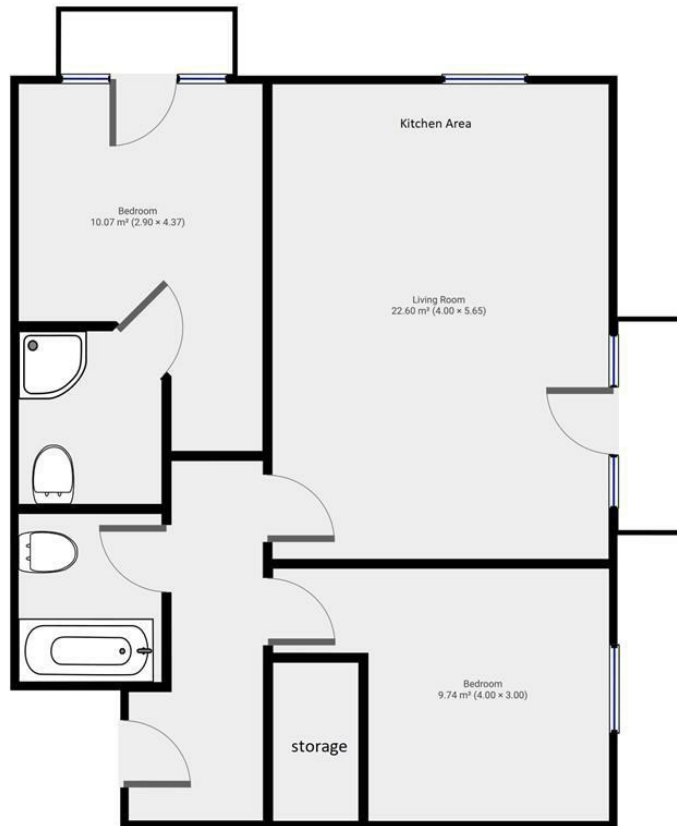


- 2 BED / 2 BATH
- 2 BALCONIES
- PRIVATE FENCED GARDEN
- CLOSE TO FINCHLEY LIDO
- AVAILABLE FROM 15/06/2026



Connections House, N3

Total Area: 58.2 sq metres / 626 sq ft approx.



Please note: Whilst every attempt has been made to ensure the accuracy of our floor plans please note that measurements are approximate and no responsibility is taken for any error, omission or misstatement. The floor plans we produce are for representation purposes only and should be used as such by any prospective purchaser. No guarantee is given on the total square footage of the property if quoted on our plans. Any figure given is for initial guidance only and should not be relied on as a basis for valuation purposes.



11 STATION ROAD
FINCHLEY
LONDON
N3 2SB
02083461180